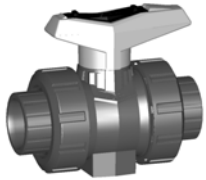
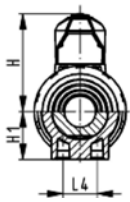
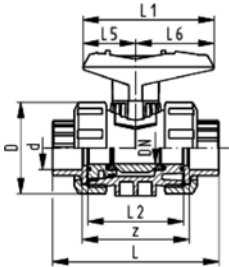


# Ball valves

## Ball valve type 546 PVC-U With solvent cement sockets metric



DN10/15 - 50



### Model:

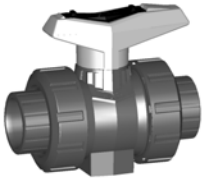
- Image and drawing DN65-100 please see **New product ball valve DN65-100**
- For easy installation and removal
- z-dimension, valve end and valve nut are **not compatible** with type 346 (DN10/15-50) resp. type 370 (DN65-100)
- Ball seals PTFE
- Without mounting inserts

### Option:

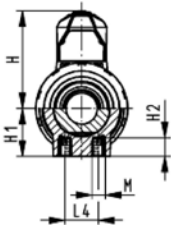
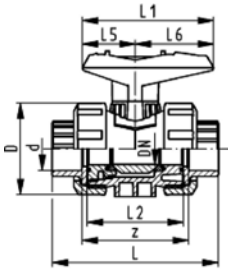
- Individual configuration of the valve (see form)
- Multifunctional module with integrated limit switches
- Pneumatic or electric actuators from +GF+

d [mm]	DN [mm]	PN	kv-value ( $\Delta p=1$ bar) [l/min]	EPDM Code	FPM Code	kg
16	10	16	71	<b>161 546 001</b>	<b>161 546 011</b>	0.150
20	15	16	185	<b>161 546 002</b>	<b>161 546 012</b>	0.150
25	20	16	350	<b>161 546 003</b>	<b>161 546 013</b>	0.230
32	25	16	700	<b>161 546 004</b>	<b>161 546 014</b>	0.330
40	32	16	1000	<b>161 546 005</b>	<b>161 546 015</b>	0.600
50	40	16	1600	<b>161 546 006</b>	<b>161 546 016</b>	0.800
63	50	16	3100	<b>161 546 007</b>	<b>161 546 017</b>	1.460
75	65	16	5000	<b>161 546 008</b>	<b>161 546 018</b>	4.900
90	80	16	7000	<b>161 546 009</b>	<b>161 546 019</b>	7.400
110	100	16	11000	<b>161 546 010</b>	<b>161 546 020</b>	11.600

d [mm]	D [mm]	H [mm]	H1 [mm]	L [mm]	L1 [mm]	L2 [mm]	L4 [mm]	L5 [mm]	L6 [mm]	z [mm]
16	50	57	27	92	77	56	25	32	45	64
20	50	57	27	95	77	56	25	32	45	64
25	58	67	30	110	97	65	25	39	58	72
32	68	73	36	123	97	71	25	39	58	79
40	84	90	44	146	128	85	45	54	74	94
50	97	97	51	157	128	89	45	54	74	95
63	124	116	64	183	152	101	45	66	87	107
75	166	149	85	233	270	136	70	64	206	144
90	200	161	105	254	270	141	70	64	206	151
110	238	178	123	301	320	164	120	64	256	174



DN10/15 - 50



## Ball valve type 546 PVC-U With mounting inserts With solvent cement sockets metric

### Model:

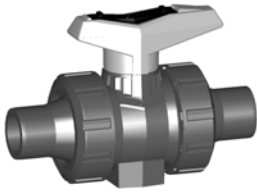
- Image and drawing DN65-100 please see **New product ball valve DN65-100**
- For easy installation and removal
- z-dimension, valve end and valve nut are **not compatible** with type 346 (DN10/15-50) resp. type 370 (DN65-100)
- Ball seals PTFE
- Integrated stainless steel mounting inserts

### Option:

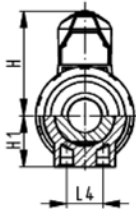
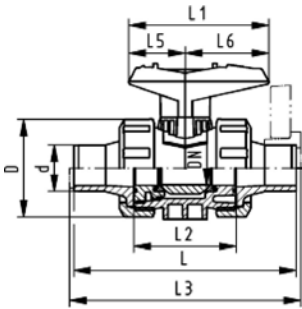
- Individual configuration of the valve (see form)
- Multifunctional module with integrated limit switches
- Pneumatic or electric actuators from +GF+

d [mm]	DN [mm]	PN	kv-value ( $\Delta p=1$ bar) [l/min]	EPDM Code	FPM Code	kg
16	10	16	71	<b>161 546 061</b>	<b>161 546 071</b>	0.150
20	15	16	185	<b>161 546 062</b>	<b>161 546 072</b>	0.150
25	20	16	350	<b>161 546 063</b>	<b>161 546 073</b>	0.230
32	25	16	700	<b>161 546 064</b>	<b>161 546 074</b>	0.330
40	32	16	1000	<b>161 546 065</b>	<b>161 546 075</b>	0.600
50	40	16	1600	<b>161 546 066</b>	<b>161 546 076</b>	0.800
63	50	16	3100	<b>161 546 067</b>	<b>161 546 077</b>	1.460
75	65	16	5000	<b>161 546 068</b>	<b>161 546 078</b>	4.900
90	80	16	7000	<b>161 546 069</b>	<b>161 546 079</b>	7.400
110	100	16	11000	<b>161 546 070</b>	<b>161 546 080</b>	11.600

d [mm]	D [mm]	H [mm]	H1 [mm]	H2 [mm]	L [mm]	L1 [mm]	L2 [mm]	L4 [mm]	L5 [mm]	L6 [mm]	M	z [mm]
16	50	57	27	12	92	77	56	25	32	45	6	64
20	50	57	27	12	95	77	56	25	32	45	6	64
25	58	67	30	12	110	97	65	25	39	58	6	72
32	68	73	36	12	123	97	71	25	39	58	6	79
40	84	90	44	15	146	128	85	45	54	74	8	94
50	97	97	51	15	157	128	89	45	54	74	8	95
63	124	116	64	15	183	152	101	45	66	87	8	107
75	166	149	85	15	233	270	136	70	64	206	8	144
90	200	161	105	15	254	270	141	70	64	206	8	151
110	238	178	123	22	301	320	164	120	64	256	12	174



DN10/15 - 50



## Ball valve type 546 PVC-U With solvent cement spigots metric

### Model:

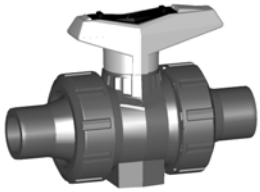
- Image and drawing DN65-100 please see **New product ball valve DN65-100**
- For easy installation and removal
- z-dimension, valve end and valve nut are **not compatible** with type 346 (DN10/15-50) resp. type 370 (DN65-100)
- Ball seals PTFE
- Without mounting inserts

### Option:

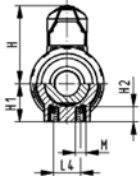
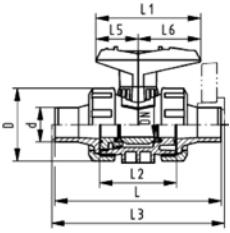
- Individual configuration of the valve (see form)
- Multifunctional module with integrated limit switches
- Pneumatic or electric actuators from +GF+

d [mm]	DN [mm]	PN	kv-value ( $\Delta p=1$ bar) [l/min]	EPDM Code	FPM Code	kg	
16	10	16	71	<b>161 546 041</b>	<b>161 546 051</b>	0.155	
20	15	16	185	<b>161 546 042</b>	<b>161 546 052</b>	0.155	
25	20	16	350	<b>161 546 043</b>	<b>161 546 053</b>	0.240	
32	25	16	700	<b>161 546 044</b>	<b>161 546 054</b>	0.345	
40	32	16	1000	<b>161 546 045</b>	<b>161 546 055</b>	0.615	
50	40	16	1600	<b>161 546 046</b>	<b>161 546 056</b>	0.840	
63	50	16	3100	<b>161 546 047</b>	<b>161 546 057</b>	1.545	
75	65	16	5000	<b>161 546 048</b>	<b>161 546 058</b>	5.100	
90	80	16	7000	<b>161 546 049</b>	<b>161 546 059</b>	7.500	
110	100	16	11000	<b>161 546 050</b>	<b>161 546 060</b>	11.900	

d [mm]	D [mm]	H [mm]	H1 [mm]	L [mm]	L1 [mm]	L2 [mm]	L3 [mm]	L4 [mm]	L5 [mm]	L6 [mm]	
16	50	57	27	114	77	56		25	32	45	
20	50	57	27	124	77	56	130	25	32	45	
25	58	67	30	144	97	65	150	25	39	58	
32	68	73	36	154	97	71	160	25	39	58	
40	84	90	44	174	128	85	180	45	54	74	
50	97	97	51	194	128	89	200	45	54	74	
63	124	116	64	224	152	101	230	45	66	87	
75	166	149	85	284	270	136	290	70	64	206	
90	200	161	105	300	270	141	310	70	64	206	
110	238	178	123	340	320	164	350	120	64	256	



DN10/15 - 50






## Ball valve type 546 PVC-U With mounting inserts With solvent cement spigots metric




### Model:

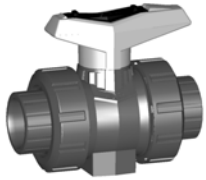
- Image and drawing DN65-100 please see **New product ball valve DN65-100**
- For easy installation and removal
- z-dimension, valve end and valve nut are **not compatible** with type 346 (DN10/15-50) resp. type 370 (DN65-100)
- Ball seals PTFE
- Integrated stainless steel mounting inserts

### Option:

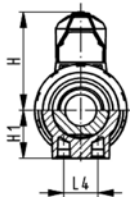
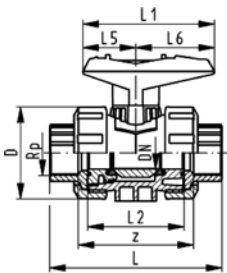
- Individual configuration of the valve (see form)
- Multifunctional module with integrated limit switches
- Pneumatic or electric actuators from +GF+

d [mm]	DN [mm]	PN	kv-value ( $\Delta p=1$ bar) [l/min]	EPDM Code	FPM Code	kg	
16	10	16	71	<b>161 546 721</b>	<b>161 546 731</b>	0.157	
20	15	16	185	<b>161 546 722</b>	<b>161 546 732</b>	0.157	
25	20	16	350	<b>161 546 723</b>	<b>161 546 733</b>	0.242	
32	25	16	700	<b>161 546 724</b>	<b>161 546 734</b>	0.347	
40	32	16	1000	<b>161 546 725</b>	<b>161 546 735</b>	0.620	
50	40	16	1600	<b>161 546 726</b>	<b>161 546 736</b>	0.845	
63	50	16	3100	<b>161 546 727</b>	<b>161 546 737</b>	1.550	
 75	65	16	5000	<b>161 546 728</b>	<b>161 546 738</b>	5.100	
 90	80	16	7000	<b>161 546 729</b>	<b>161 546 739</b>	7.500	
 110	100	16	11000	<b>161 546 730</b>	<b>161 546 740</b>	11.900	

d [mm]	D [mm]	H [mm]	H1 [mm]	H2 [mm]	L [mm]	L1 [mm]	L2 [mm]	L3 [mm]	L4 [mm]	L5 [mm]	L6 [mm]	M	
16	50	57	27	12	114	77	56	130	25	32	45	M6	
20	50	57	27	12	124	77	56	130	25	32	45	M6	
25	58	67	30	12	144	97	65	150	25	39	58	M6	
32	68	73	36	12	154	97	71	160	25	39	58	M6	
40	84	90	44	15	174	128	85	180	45	54	74	M8	
50	97	97	51	15	194	128	89	200	45	54	74	M8	
63	124	116	64	15	224	152	101	230	45	66	87	M8	
 75	166	149	85	15	284	270	136	290	70	64	206	M8	
 90	200	161	105	15	300	270	141	310	70	64	206	M8	
 110	238	178	123	22	340	320	164	350	120	64	256	M12	



DN10/15 - 50



## Ball valve type 546 PVC-U With threaded sockets Rp

### Model:

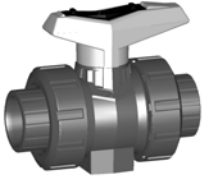
- Image and drawing DN65-100 please see **New product ball valve DN65-100**
- For easy installation and removal
- z-dimension, valve end and valve nut are **not compatible** with type 346 (DN10/15-50) resp. type 370 (DN65-100)
- Ball seals PTFE
- Without mounting inserts

### Option:

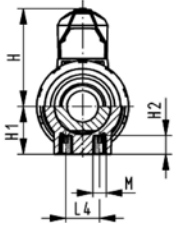
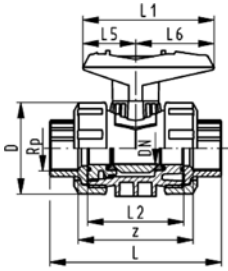
- Individual configuration of the valve (see form)
- Multifunctional module with integrated limit switches
- Pneumatic or electric actuators from +GF+

Rp [inch]	DN [mm]	PN	kv-value ( $\Delta p=1$ bar) [l/min]	EPDM Code	FPM Code	kg	
3/8	10	10	71	<b>161 546 021</b>	<b>161 546 031</b>	0.150	
1/2	15	10	185	<b>161 546 022</b>	<b>161 546 032</b>	0.150	
3/4	20	10	350	<b>161 546 023</b>	<b>161 546 033</b>	0.230	
1	25	10	700	<b>161 546 024</b>	<b>161 546 034</b>	0.330	
1 1/4	32	10	1000	<b>161 546 025</b>	<b>161 546 035</b>	0.600	
1 1/2	40	10	1600	<b>161 546 026</b>	<b>161 546 036</b>	0.800	
2	50	10	3100	<b>161 546 027</b>	<b>161 546 037</b>	1.460	
2 1/2	65	10	5000	<b>161 546 028</b>	<b>161 546 038</b>	5.000	
3	80	10	7000	<b>161 546 029</b>	<b>161 546 039</b>	7.500	
4	100	10	11000	<b>161 546 030</b>	<b>161 546 040</b>	11.700	

Rp [inch]	D [mm]	H [mm]	H1 [mm]	L [mm]	L1 [mm]	L2 [mm]	L4 [mm]	L5 [mm]	L6 [mm]	z [mm]	
3/8	50	57	27	95	77	56	25	32	45	69	
1/2	50	57	27	100	77	56	25	32	45	67	
3/4	58	67	30	114	97	65	25	39	58	78	
1	68	73	36	127	97	71	25	39	58	85	
1 1/4	84	90	44	146	128	85	45	54	74	100	
1 1/2	97	97	51	152	128	89	45	54	74	106	
2	124	116	64	177	152	101	45	66	87	121	
2 1/2	166	149	85	233	270	136	70	64	206	144	
3	200	161	105	254	270	141	70	64	206	151	
4	238	178	123	301	320	164	120	64	256	174	



DN10/15 - 50



## Ball valve type 546 PVC-U With mounting inserts With threaded sockets Rp

### Model:

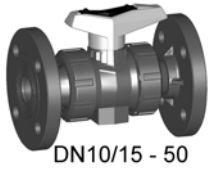
- Image and drawing DN65-100 please see **New product ball valve DN65-100**
- For easy installation and removal
- z-dimension, valve end and valve nut are **not compatible** with type 346 (DN10/15-50) resp. type 370 (DN65-100)
- Ball seals PTFE
- Integrated stainless steel mounting inserts

### Option:

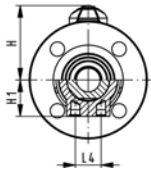
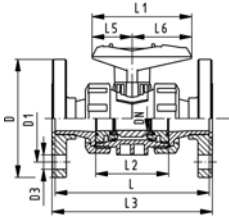
- Individual configuration of the valve (see form)
- Multifunctional module with integrated limit switches
- Pneumatic or electric actuators from +GF+

Rp [inch]	DN [mm]	PN	kv-value ( $\Delta p=1$ bar) [l/min]	EPDM Code	FPM Code	kg	
3/8	10	10	71	<b>161 546 741</b>	<b>161 546 751</b>	0.152	
1/2	15	10	185	<b>161 546 742</b>	<b>161 546 752</b>	0.152	
3/4	20	10	350	<b>161 546 743</b>	<b>161 546 753</b>	0.232	
1	25	10	700	<b>161 546 744</b>	<b>161 546 754</b>	0.332	
1 1/4	32	10	1000	<b>161 546 745</b>	<b>161 546 755</b>	0.605	
1 1/2	40	10	1600	<b>161 546 746</b>	<b>161 546 756</b>	0.805	
2	50	10	3100	<b>161 546 747</b>	<b>161 546 757</b>	1.465	
2 1/2	65	10	5000	<b>161 546 748</b>	<b>161 546 758</b>	5.000	
3	80	10	7000	<b>161 546 749</b>	<b>161 546 759</b>	7.500	
4	100	10	11000	<b>161 546 750</b>	<b>161 546 760</b>	11.700	

Rp [inch]	D [mm]	H [mm]	H1 [mm]	H2 [mm]	L [mm]	L1 [mm]	L2 [mm]	L4 [mm]	L5 [mm]	L6 [mm]	M	z [mm]	
3/8	50	57	27	12	95	77	56	25	32	45	M6	69	
1/2	50	57	27	12	100	77	56	25	32	45	M6	67	
3/4	58	67	30	12	114	97	65	25	39	58	M6	78	
1	68	73	36	12	127	97	71	25	39	58	M6	85	
1 1/4	84	90	44	15	146	128	85	45	54	74	M8	100	
1 1/2	97	97	51	15	152	128	89	45	54	74	M8	106	
2	124	116	64	15	177	152	101	45	66	87	M8	121	
2 1/2	166	149	85	15	233	270	136	70	64	206	M8	144	
3	200	161	105	15	254	270	141	70	64	206	M8	151	
4	238	178	123	22	301	320	164	120	64	256	M12	174	



DN10/15 - 50



## Ball valve type 546 PVC-U With PVC-U fixed flanges serrated metric

### Model:

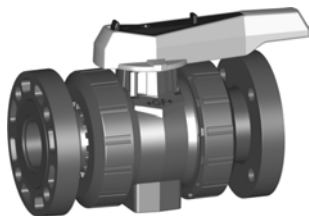
- Image and drawing DN65-100 please see **New product ball valve DN65-100**
- For easy installation and removal
- z-dimension, valve end and valve nut are **not compatible** with type 346 (DN10/15-50) resp. type 370 (DN65-100)
- Ball seals PTFE
- Without mounting inserts
- Overall length according to EN 558-1
- Connecting dimension: ISO 7005 PN10, EN 1092 PN10, DIN 2501 PN10

### Option:

- Individual configuration of the valve (see form)
- Multifunctional module with integrated limit switches
- Pneumatic or electric actuators from +GF+

d [mm]	DN [mm]	PN	kv-value ( $\Delta p=1$ bar) [l/min]	EPDM Code	FPM Code	kg
20	15	16	185	<b>800 000 182</b>	<b>800 000 192</b>	0.370
25	20	16	350	<b>800 000 183</b>	<b>800 000 193</b>	0.510
32	25	16	700	<b>800 000 184</b>	<b>800 000 194</b>	0.740
40	32	16	1000	<b>800 000 185</b>	<b>800 000 195</b>	1.230
50	40	16	1600	<b>800 000 186</b>	<b>800 000 196</b>	1.610
63	50	16	3100	<b>800 000 187</b>	<b>800 000 197</b>	2.710

d [mm]	D [mm]	D1 [mm]	D3 [mm]	H [mm]	H1 [mm]	L [mm]	L1 [mm]	L2 [mm]	L3 [mm]	L4 [mm]	L5 [mm]	L6 [mm]
20	95	65	14	57	27	124	77	56	130	25	32	45
25	105	75	14	67	30	144	97	65	150	25	39	58
32	115	85	14	73	36	154	97	71	160	25	39	58
40	140	100	18	90	44	174	128	85	180	45	54	74
50	150	110	18	97	51	194	128	89	200	45	54	74
63	165	125	18	116	64	224	152	101	230	45	66	87



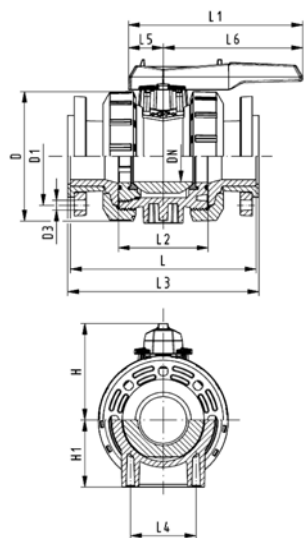
## Ball valve type 546 PVC-U With mounting inserts With backing flanges PVC-U metric

### Model:

- Image and drawing DN65-100 please see **New product ball valve DN65-100**
- For easy installation and removal
- z-dimension, valve end and valve nut are **not compatible** with type 346 (DN10/15-50) resp. type 370 (DN65-100)
- Ball seals PTFE
- Integrated stainless steel mounting inserts
- Overall length according to EN 558-1
- Connecting dimension: ISO 7005 PN10, EN 1092 PN10, DIN 2501 PN10

### Option:

- Individual configuration of the valve (see form)
- Multifunctional module with integrated limit switches
- Pneumatic or electric actuators from +GF+

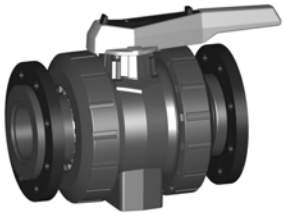


d [mm]	DN [mm]	PN	kv-value ( $\Delta p=1$ bar) [l/min]	EPDM Code	FPM Code	kg						
75	65	10	5000	<b>161 546 108</b>	<b>161 546 118</b>	7.200						
90	80	10	7000	<b>161 546 109</b>	<b>161 546 119</b>	10.600						
110	100	10	11000	<b>161 546 110</b>	<b>161 546 120</b>	16.500						

d [mm]	D [mm]	H [mm]	H1 [mm]	H2 [mm]	L [mm]	L1 [mm]	L2 [mm]	L4 [mm]	L5 [mm]	L6 [mm]	M		
75	166	149	85	15	284	270	136	70	64	206	M8		
90	200	161	105	15	300	270	141	70	64	206	M8		
110	238	178	123	22	340	320	164	120	64	256	M12		





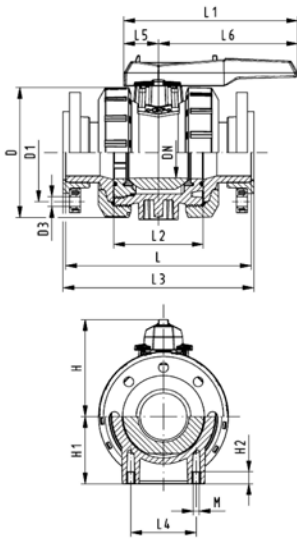
## Ball valve type 546 PVC-U With mounting inserts With backing flanges PP-st metric

### Model:

- Image and drawing DN65-100 please see **New product ball valve DN65-100**
- For easy installation and removal
- z-dimension, valve end and valve nut are **not compatible** with type 346 (DN10/15-50) resp. type 370 (DN65-100)
- Ball seals PTFE
- Integrated stainless steel mounting inserts
- Overall length according to EN 558-1
- Connecting dimensions: ISO 7005, EN 1092, BS 4504, DIN 2501; bolt circle PN 10

### Option:

- Individual configuration of the valve (see form)
- Multifunctional module with integrated limit switches
- Pneumatic or electric actuators from +GF+

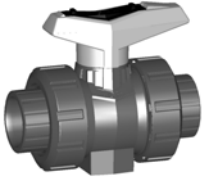


d [mm]	DN [mm]	PN	kv-value ( $\Delta p=1$ bar) [l/min]	EPDM Code	FPM Code	kg
75	65	16	5000	<b>161 546 948</b>	<b>161 546 958</b>	9.100
90	80	16	7000	<b>161 546 949</b>	<b>161 546 959</b>	12.400
110	100	16	11000	<b>161 546 950</b>	<b>161 546 960</b>	18.500

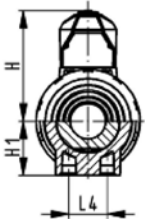
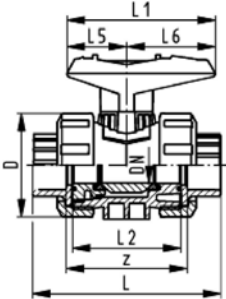
d [mm]	D [mm]	H [mm]	H1 [mm]	L [mm]	L1 [mm]	L2 [mm]	L3 [mm]	L4 [mm]	L5 [mm]	L6 [mm]
75	166	149	85	284	270	136	290	70	64	206
90	200	161	105	300	270	141	310	70	64	206
110	238	178	123	340	320	164	350	120	64	256

# Ball valves

## Ball valve type 546 PVC-U With solvent cement sockets Inch BS



DN10/15 - 50









### Model:

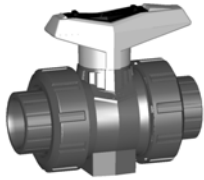
- Image and drawing DN65-100 please see **New product ball valve DN65-100**
- For easy installation and removal
- z-dimension, valve end and valve nut are **not compatible** with type 346 (DN10/15-50) resp. type 370 (DN65-100)
- Ball seals PTFE
- Without mounting inserts

### Option:

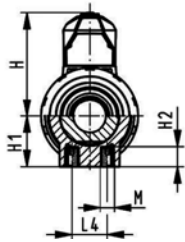
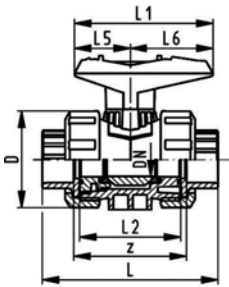
- Individual configuration of the valve (see form)
- Multifunctional module with integrated limit switches
- Pneumatic or electric actuators from +GF+

Inch	DN [mm]	PN	kv-value ( $\Delta p=1$ bar) [l/min]	EPDM Code	FPM Code	kg
3/8	10	16	71	<b>161 546 201</b>	<b>161 546 211</b>	0.150
1/2	15	16	185	<b>161 546 202</b>	<b>161 546 212</b>	0.150
3/4	20	16	350	<b>161 546 203</b>	<b>161 546 213</b>	0.230
1	25	16	700	<b>161 546 204</b>	<b>161 546 214</b>	0.330
1 1/4	32	16	1000	<b>161 546 205</b>	<b>161 546 215</b>	0.585
1 1/2	40	16	1600	<b>161 546 206</b>	<b>161 546 216</b>	0.815
2	50	16	3100	<b>161 546 207</b>	<b>161 546 217</b>	1.490
	65	16	5000	<b>161 546 008</b>	<b>161 546 018</b>	4.900
	80	16	7000	<b>161 546 209</b>	<b>161 546 219</b>	7.400
	100	16	11000	<b>161 546 210</b>	<b>161 546 220</b>	11.600

Inch	D [mm]	H [mm]	H1 [mm]	L [mm]	L1 [mm]	L2 [mm]	L4 [mm]	L5 [mm]	L6 [mm]	z [mm]
3/8	50	57	27	92	77	56	25	32	45	60
1/2	50	57	27	95	77	56	25	32	45	60
3/4	58	67	30	110	97	65	25	39	58	69
1	68	73	36	123	97	71	25	39	58	75
1 1/4	84	90	44	146	128	85	45	54	74	89
1 1/2	97	97	51	157	128	89	45	54	74	97
2	124	116	64	183	152	101	45	66	87	110
	166	149	85	233	270	136	70	64	206	144
	200	161	105	254	270	141	70	64	206	151
	238	178	123	301	320	164	120	64	256	174



DN10/15 - 50




## Ball valve type 546 PVC-U With mounting inserts With solvent cement sockets inch BS


### Model:

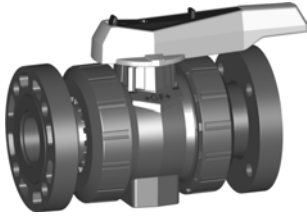
- Image and drawing DN65-100 please see **New product ball valve DN65-100**
- For easy installation and removal
- z-dimension, valve end and valve nut are **not compatible** with type 346 (DN10/15-50) resp. type 370 (DN65-100)
- Ball seals PTFE
- Integrated stainless steel mounting inserts

### Option:

- Individual configuration of the valve (see form)
- Multifunctional module with integrated limit switches
- Pneumatic or electric actuators from +GF+

Inch	DN [mm]	PN	kv-value ( $\Delta p=1$ bar) [l/min]	EPDM Code	FPM Code	kg	
3/8	10	16	71	<b>161 546 241</b>	<b>161 546 251</b>	0.150	
1/2	15	16	185	<b>161 546 242</b>	<b>161 546 252</b>	0.150	
3/4	20	16	350	<b>161 546 243</b>	<b>161 546 253</b>	0.230	
1	25	16	700	<b>161 546 244</b>	<b>161 546 254</b>	0.330	
1 1/4	32	16	1000	<b>161 546 245</b>	<b>161 546 255</b>	0.585	
1 1/2	40	16	1600	<b>161 546 246</b>	<b>161 546 256</b>	0.815	
2	50	16	3100	<b>161 546 247</b>	<b>161 546 257</b>	1.490	
 2.5	65	16	5000	<b>161 546 068</b>	<b>161 546 078</b>	4.900	
3	80	16	7000	<b>161 546 249</b>	<b>161 546 259</b>		
4	100	16	11000	<b>161 546 250</b>	<b>161 546 260</b>		

Inch	D [mm]	H [mm]	H1 [mm]	H2 [mm]	L [mm]	L1 [mm]	L2 [mm]	L4 [mm]	L5 [mm]	L6 [mm]	M	z [mm]	
3/8	50	57	27	12	92	77	56	25	32	45	6	67	
1/2	50	57	27	12	95	77	56	25	32	45	6	61	
3/4	58	67	30	12	110	97	65	25	39	58	6	70	
1	68	73	36	12	123	97	71	25	39	58	6	76	
1 1/4	84	90	44	15	146	128	85	45	54	74	8	90	
1 1/2	97	97	51	15	157	128	89	45	54	74	8	94	
2	124	116	64	15	183	152	101	45	66	87	8	107	
 2.5	166	149	85	15	233	270	136	70	64	206	8	144	
3	200	161	105	15	254	270	141	70	64	206	8	151	
4	238	178	123	22	301	320	164	120	64	256	12	174	



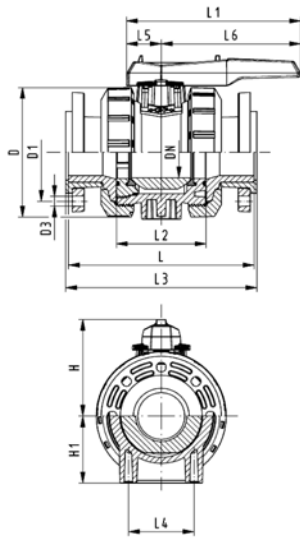
## Ball valve type 546 PVC-U With mounting inserts With backing flanges PVC-U ASTM/ANSI

### Model:

- Image and drawing DN65-100 please see **New product ball valve DN65-100**
- For easy installation and removal
- z-dimension, valve end and valve nut are **not compatible** with type 346 (DN10/15-50) resp. type 370 (DN65-100)
- Ball seals PTFE
- Integrated stainless steel mounting inserts
- Overall length according to EN 558-1
- Connecting dimension: ANSI/ASME B 16.5 class 150 (ASTM D 4024), BS EN 1759

### Option:

- Individual configuration of the valve (see form)
- Multifunctional module with integrated limit switches
- Pneumatic or electric actuators from +GF+

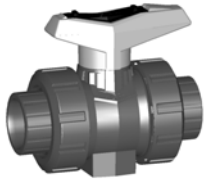


Inch	DN [mm]	PN	kv-value ( $\Delta p=1$ bar) [l/min]	EPDM Code	FPM Code	kg
2 1/2	65	10	5000	<b>161 546 168</b>	<b>161 546 178</b>	7.300
3	80	10	7000	<b>161 546 169</b>	<b>161 546 179</b>	10.600
4	100	10	11000	<b>161 546 170</b>	<b>161 546 180</b>	16.400

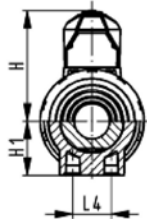
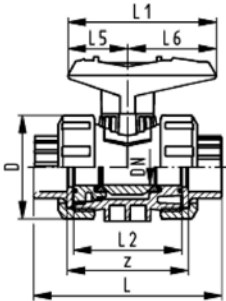
Inch	D [mm]	D1 [mm]	D3 [mm]	L [mm]	L1 [mm]	L2 [mm]	L3 [mm]	L4 [mm]	L5 [mm]	L6 [mm]	H [mm]	H1 [mm]	M
2 1/2	166	140	19	284	270	136	290	70	64	206	149	85	8
3	200	152	19	300	270	141	310	70	64	206	161	105	8
4	238	191	19	340	320	164	350	120	64	256	178	123	12

# Ball valves

## Ball valve type 546 PVC-U With solvent cement sockets Inch ASTM Inclusive 2 threaded valve ends NPT



DN10/15 - 50



### Model:

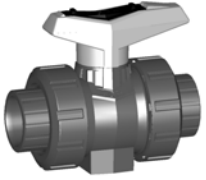
- Image and drawing DN65-100 please see **New product ball valve DN65-100**
- For easy installation and removal
- z-dimension, valve end and valve nut are **not compatible** with type 346 (DN10/15-50) resp. type 370 (DN65-100)
- Ball seals PTFE
- Without mounting inserts
- Threaded valve ends are only enclosed for DN10/15-50

### Option:

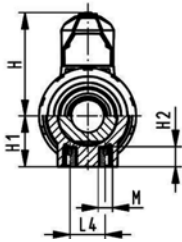
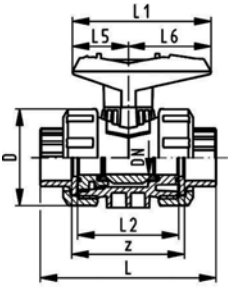
- Individual configuration of the valve (see form)
- Multifunctional module with integrated limit switches
- Pneumatic or electric actuators from +GF+

Inch	DN [mm]	PN	kv-value ( $\Delta p=1$ bar) [l/min]	EPDM Code	FPM Code	kg
3/8	10	16	71	<b>161 546 301</b>	<b>161 546 311</b>	0.180
1/2	15	16	185	<b>161 546 302</b>	<b>161 546 312</b>	0.190
3/4	20	16	350	<b>161 546 303</b>	<b>161 546 313</b>	0.290
1	25	16	700	<b>161 546 304</b>	<b>161 546 314</b>	0.425
1 1/4	32	16	1000	<b>161 546 305</b>	<b>161 546 315</b>	0.730
1 1/2	40	16	1600	<b>161 546 306</b>	<b>161 546 316</b>	0.990
2	50	16	3100	<b>161 546 307</b>	<b>161 546 317</b>	1.775
2 1/2	65	16	5000	<b>161 546 308</b>	<b>161 546 318</b>	4.900
3	80	16	7000	<b>161 546 309</b>	<b>161 546 319</b>	7.400
4	100	16	11000	<b>161 546 310</b>	<b>161 546 320</b>	11.500

Inch	D [mm]	H [mm]	H1 [mm]	L [mm]	L1 [mm]	L2 [mm]	L4 [mm]	L5 [mm]	L6 [mm]	z [mm]
3/8	50	57	27	105	77	56	25	32	45	67
1/2	50	57	27	105	77	56	25	32	45	61
3/4	58	67	30	121	97	65	25	39	58	70
1	68	73	36	133	97	71	25	39	58	76
1 1/4	84	90	44	154	128	85	45	54	74	90
1 1/2	97	97	51	164	128	89	45	54	74	94
2	124	116	64	183	152	101	45	66	87	107
2 1/2	166	149	85	233	270	136	70	64	206	144
3	200	161	105	254	270	141	70	64	206	151
4	238	178	123	301	320	164	120	64	256	174



DN10/15 - 50



## Ball valve type 546 PVC-U With mounting inserts With solvent cement sockets Inch ASTM Inclusive 2 threaded valve ends NPT

### Model:

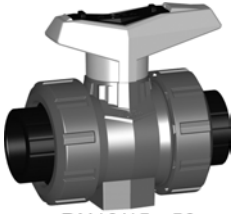
- Image and drawing DN65-100 please see **New product ball valve DN65-100**
- For easy installation and removal
- z-dimension, valve end and valve nut are **not compatible** with type 346 (DN10/15-50) resp. type 370 (DN65-100)
- Ball seals PTFE
- Integrated stainless steel mounting inserts
- Threaded valve ends are only enclosed for DN10/15-50

### Option:

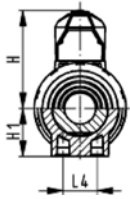
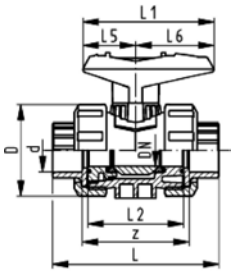
- Individual configuration of the valve (see form)
- Multifunctional module with integrated limit switches
- Pneumatic or electric actuators from +GF+

Inch	DN [mm]	PN	kv-value ( $\Delta p=1$ bar) [l/min]	EPDM Code	FPM Code	kg	
3/8	10	16	71	<b>161 546 341</b>	<b>161 546 351</b>	0.184	
1/2	15	16	185	<b>161 546 342</b>	<b>161 546 352</b>	0.194	
3/4	20	16	350	<b>161 546 343</b>	<b>161 546 353</b>	0.294	
1	25	16	700	<b>161 546 344</b>	<b>161 546 354</b>	0.429	
1 1/4	32	16	1000	<b>161 546 345</b>	<b>161 546 355</b>	0.740	
1 1/2	40	16	1600	<b>161 546 346</b>	<b>161 546 356</b>	1.000	
2	50	16	3100	<b>161 546 347</b>	<b>161 546 357</b>	1.785	
2 1/2	65	16	5000	<b>161 546 348</b>	<b>161 546 358</b>	4.900	
3	80	16	7000	<b>161 546 349</b>	<b>161 546 359</b>	7.400	
4	100	16	11000	<b>161 546 350</b>	<b>161 546 360</b>	11.500	

Inch	D [mm]	H [mm]	H1 [mm]	H2 [mm]	L [mm]	L1 [mm]	L2 [mm]	L4 [mm]	L5 [mm]	L6 [mm]	M	z [mm]
3/8	50	57	27	12	105	77	56	25	32	45	6	67
1/2	50	57	27	12	105	77	56	25	32	45	6	61
3/4	58	67	30	12	121	97	65	25	39	58	6	70
1	68	73	36	12	133	97	71	25	39	58	6	76
1 1/4	84	90	44	15	154	128	85	45	54	74	8	90
1 1/2	97	97	51	15	164	128	89	45	54	74	8	94
2	124	116	64	15	183	152	101	45	66	87	8	107
2 1/2	166	149	85	15	233	270	136	70	64	206	8	144
3	200	161	105	15	254	270	141	70	64	206	8	151
4	238	178	123	22	301	320	164	120	64	256	12	174



DN10/15 - 50



## Ball valve type 546 PVC-U With fusion sockets PE 100 metric

### Model:

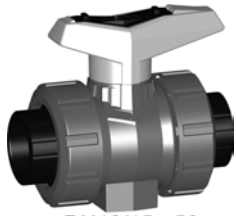
- Image and drawing DN65-100 please see **New product ball valve DN65-100**
- For easy installation and removal
- z-dimension, valve end and valve nut are **not compatible** with type 346 (DN10/15-50) resp. type 370 (DN65-100)
- Ball seals PTFE
- Without mounting inserts

### Option:

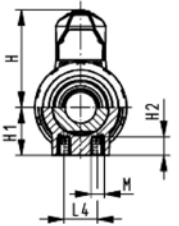
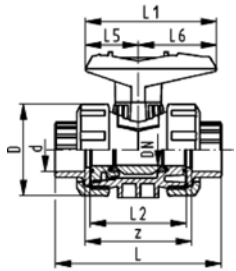
- Individual configuration of the valve (see form)
- Multifunctional module with integrated limit switches
- Pneumatic or electric actuators from +GF+

d [mm]	DN [mm]	PN	kv-value ( $\Delta p=1$ bar) [l/min]	EPDM Code	FPM Code	kg
16	10	16	71	<b>800 000 101</b>	<b>800 000 111</b>	0.170
20	15	16	185	<b>800 000 102</b>	<b>800 000 112</b>	0.170
25	20	16	350	<b>800 000 103</b>	<b>800 000 113</b>	0.240
32	25	16	700	<b>800 000 104</b>	<b>800 000 114</b>	0.340
40	32	16	1000	<b>800 000 105</b>	<b>800 000 115</b>	0.610
50	40	16	1600	<b>800 000 106</b>	<b>800 000 116</b>	0.850
63	50	16	3100	<b>800 000 107</b>	<b>800 000 117</b>	1.550

d [mm]	D [mm]	H [mm]	H1 [mm]	L [mm]	L1 [mm]	L2 [mm]	L4 [mm]	L5 [mm]	L6 [mm]	z [mm]
16	50	57	27	93	77	56	25	32	45	67
20	50	57	27	95	77	56	25	32	45	66
25	58	67	30	108	97	65	25	39	58	77
32	68	73	36	119	97	71	25	39	58	83
40	84	90	44	137	128	85	45	54	74	99
50	97	97	51	147	128	89	45	54	74	105
63	124	116	64	168	152	101	45	66	87	113



DN10/15 - 50



## Ball valve type 546 PVC-U With mounting inserts With fusion sockets PE 100 metric

### Model:

- Image and drawing DN65-100 please see **New product ball valve DN65-100**
- For easy installation and removal
- z-dimension, valve end and valve nut are **not compatible** with type 346 (DN10/15-50) resp. type 370 (DN65-100)
- Ball seals PTFE
- Integrated stainless steel mounting inserts

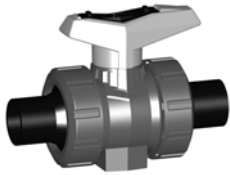
### Option:

- Individual configuration of the valve (see form)
- Multifunctional module with integrated limit switches
- Pneumatic or electric actuators from +GF+

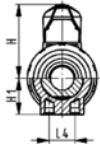
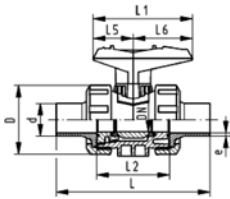
d [mm]	DN [mm]	PN	kv-value ( $\Delta p=1$ bar) [l/min]	EPDM Code	FPM Code	kg
16	10	16	71	<b>161 546 761</b>	<b>161 546 771</b>	0.150
20	15	16	185	<b>161 546 762</b>	<b>161 546 772</b>	0.150
25	20	16	350	<b>161 546 763</b>	<b>161 546 773</b>	0.220
32	25	16	700	<b>161 546 764</b>	<b>161 546 774</b>	0.310
40	32	16	1000	<b>161 546 765</b>	<b>161 546 775</b>	0.550
50	40	16	1600	<b>161 546 766</b>	<b>161 546 776</b>	0.750
63	50	16	3100	<b>161 546 767</b>	<b>161 546 777</b>	1.360

d [mm]	D [mm]	H [mm]	H1 [mm]	H2 [mm]	L [mm]	L1 [mm]	L2 [mm]	L4 [mm]	L5 [mm]	L6 [mm]	M	z [mm]
16	50	57	27	12	93	77	56	25	32	45	M6	67
20	50	57	27	12	95	77	56	25	32	45	M6	66
25	58	67	30	12	108	97	65	25	39	58	M6	77
32	68	73	36	12	119	97	71	25	39	58	M6	83
40	84	90	44	15	137	128	85	45	54	74	M8	99
50	97	97	51	15	147	128	89	45	54	74	M8	105
63	124	116	64	15	168	152	101	45	66	87	M8	113





DN10/15 - 50



## Ball valve type 546 PVC-U With butt fusion spigots PE 100 SDR11 metric

### Model:

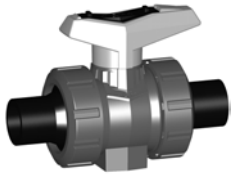
- Image and drawing DN65-100 please see **New product ball valve DN65-100**
- For easy installation and removal
- z-dimension, valve end and valve nut are **not compatible** with type 346 (DN10/15-50) resp. type 370 (DN65-100)
- Ball seals PTFE
- Without mounting inserts

### Option:

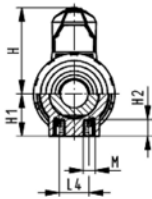
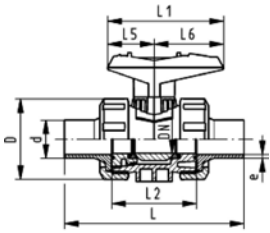
- Individual configuration of the valve (see form)
- Multifunctional module with integrated limit switches
- Pneumatic or electric actuators from +GF+

d [mm]	DN [mm]	PN	kv-value ( $\Delta p=1$ bar) [l/min]	EPDM Code	FPM Code	kg
20	15	16	185	<b>800 000 142</b>	<b>800 000 152</b>	0.160
25	20	16	350	<b>800 000 143</b>	<b>800 000 153</b>	0.240
32	25	16	700	<b>800 000 144</b>	<b>800 000 154</b>	0.340
40	32	16	1000	<b>800 000 145</b>	<b>800 000 155</b>	0.600
50	40	16	1600	<b>800 000 146</b>	<b>800 000 156</b>	0.830
63	50	16	3100	<b>800 000 147</b>	<b>800 000 157</b>	1.560

d [mm]	D [mm]	H [mm]	H1 [mm]	L [mm]	L1 [mm]	L2 [mm]	L4 [mm]	L5 [mm]	L6 [mm]	e [mm]
20	50	57	27	130	77	56	25	32	45	1,9
25	58	67	30	134	97	65	25	39	58	2,3
32	68	73	36	150	97	71	25	39	58	3
40	84	90	44	171	128	85	45	54	74	3,7
50	97	97	51	191	128	89	45	54	74	4,6
63	124	116	64	220	152	101	45	66	87	5,8



DN10/15 - 50



## Ball valve type 546 PVC-U With mounting inserts With butt fusion spigots PE 100 SDR11 metric

### Model:

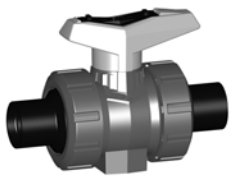
- Image and drawing DN65-100 please see **New product ball valve DN65-100**
- For easy installation and removal
- z-dimension, valve end and valve nut are **not compatible** with type 346 (DN10/15-50) resp. type 370 (DN65-100)
- Ball seals PTFE
- Integrated stainless steel mounting inserts

### Option:

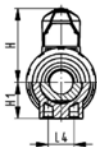
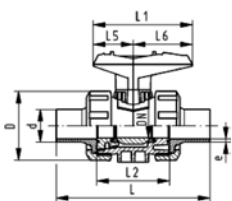
- Individual configuration of the valve (see form)
- Multifunctional module with integrated limit switches
- Pneumatic or electric actuators from +GF+

d [mm]	DN [mm]	PN	kv-value ( $\Delta p=1$ bar) [l/min]	EPDM Code	FPM Code	kg
20	15	16	185	<b>161 546 782</b>	<b>161 546 792</b>	0.150
25	20	16	350	<b>161 546 783</b>	<b>161 546 793</b>	0.220
32	25	16	700	<b>161 546 784</b>	<b>161 546 794</b>	0.310
40	32	16	1000	<b>161 546 785</b>	<b>161 546 795</b>	0.550
50	40	16	1600	<b>161 546 786</b>	<b>161 546 796</b>	0.750
63	50	16	3100	<b>161 546 787</b>	<b>161 546 797</b>	1.360

d [mm]	D [mm]	H [mm]	H1 [mm]	H2 [mm]	L [mm]	L1 [mm]	L2 [mm]	L4 [mm]	L5 [mm]	L6 [mm]	M	e [mm]
20	50	57	27	12	130	77	56	25	32	45	M6	1,9
25	58	67	30	12	134	97	65	25	39	58	M6	2,3
32	68	73	36	12	150	97	71	25	39	58	M6	3
40	84	90	44	15	171	128	85	45	54	74	M8	3,7
50	97	97	51	15	191	128	89	45	54	74	M8	4,6
63	124	116	64	15	220	152	101	45	66	87	M8	5,8



DN10/15 - 50



## Ball valve type 546 PVC-U With butt fusion spigots PE 100 SDR17.6 metric

### Model:

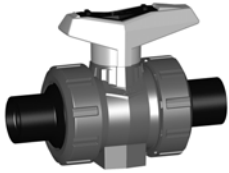
- Image and drawing DN65-100 please see **New product ball valve DN65-100**
- For easy installation and removal
- z-dimension, valve end and valve nut are **not compatible** with type 346 (DN10/15-50) resp. type 370 (DN65-100)
- Ball seals PTFE
- Without mounting inserts

### Option:

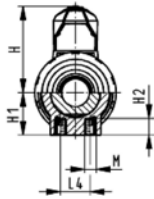
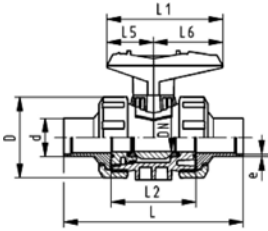
- Individual configuration of the valve (see form)
- Multifunctional module with integrated limit switches
- Pneumatic or electric actuators from +GF+

d [mm]	DN [mm]	PN	kv-value ( $\Delta p=1$ bar) [l/min]	EPDM Code	FPM Code	kg
40	32	10	1000	<b>800 000 125</b>	<b>800 000 135</b>	0.600
50	40	10	1600	<b>800 000 126</b>	<b>800 000 136</b>	0.830
63	50	10	3100	<b>800 000 127</b>	<b>800 000 137</b>	1.560

d [mm]	D [mm]	H [mm]	H1 [mm]	L [mm]	L1 [mm]	L2 [mm]	L4 [mm]	L5 [mm]	L6 [mm]	e [mm]
40	84	90	44	171	128	85	45	54	74	2,3
50	97	97	51	191	128	89	45	54	74	2,9
63	124	116	64	220	152	101	45	66	87	3,6



DN10/15 - 50



## Ball valve type 546 PVC-U With mounting inserts With butt fusion spigots PE 100 SDR17.6 metric

### Model:

- Image and drawing DN65-100 please see **New product ball valve DN65-100**
- For easy installation and removal
- z-dimension, valve end and valve nut are **not compatible** with type 346 (DN10/15-50) resp. type 370 (DN65-100)
- Ball seals PTFE
- Integrated stainless steel mounting inserts

### Option:

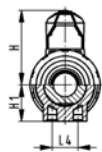
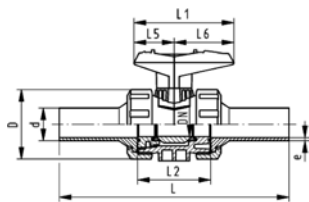
- Individual configuration of the valve (see form)
- Multifunctional module with integrated limit switches
- Pneumatic or electric actuators from +GF+

d [mm]	DN [mm]	PN	kv-value ( $\Delta p=1$ bar) [l/min]	EPDM Code	FPM Code	kg
40	32	10	1000	<b>161 546 805</b>	<b>161 546 815</b>	0.550
50	40	10	1600	<b>161 546 806</b>	<b>161 546 816</b>	0.750
63	50	10	3100	<b>161 546 807</b>	<b>161 546 817</b>	1.360

d [mm]	D [mm]	H [mm]	H1 [mm]	H2 [mm]	L [mm]	L1 [mm]	L2 [mm]	L4 [mm]	L5 [mm]	L6 [mm]	M	e [mm]
40	84	90	44	15	171	128	85	45	54	74	M8	2,3
50	97	97	51	15	191	128	89	45	54	74	M8	2,9
63	124	116	64	15	220	152	101	45	66	87	M8	3,6



DN10/15 - 50






## Ball valve type 546 PVC-U With butt fusion spigots long PE 100 SDR11 metric




### Model:

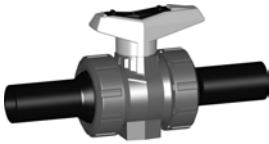
- Image and drawing DN65-100 please see **New product ball valve DN65-100**
- For easy installation and removal
- z-dimension, valve end and valve nut are **not compatible** with type 346 (DN10/15-50) resp. type 370 (DN65-100)
- Ball seals PTFE
- Without mounting inserts

### Option:

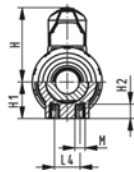
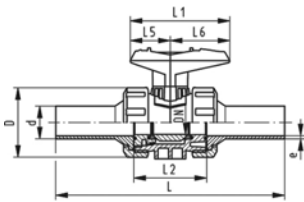
- Individual configuration of the valve (see form)
- Multifunctional module with integrated limit switches
- Pneumatic or electric actuators from +GF+

d [mm]	DN [mm]	PN	kv-value ( $\Delta p=1$ bar) [l/min]	EPDM Code	FPM Code	kg
20	15	16	185	<b>800 000 282</b>	<b>800 000 292</b>	0.170
25	20	16	350	<b>800 000 283</b>	<b>800 000 293</b>	0.250
32	25	16	700	<b>800 000 284</b>	<b>800 000 294</b>	0.370
40	32	16	1000	<b>800 000 285</b>	<b>800 000 295</b>	0.640
50	40	16	1600	<b>800 000 286</b>	<b>800 000 296</b>	0.910
63	50	16	3100	<b>800 000 287</b>	<b>800 000 297</b>	1.680
 75	65	16	5000	<b>800 000 288</b>	<b>800 000 298</b>	5.000
 90	80	16	7000	<b>800 000 289</b>	<b>800 000 299</b>	7.500
 110	100	16	11000	<b>800 000 290</b>	<b>800 000 300</b>	11.800

d [mm]	D [mm]	H [mm]	H1 [mm]	L [mm]	L1 [mm]	L2 [mm]	L4 [mm]	L5 [mm]	L6 [mm]	e [mm]
20	50	57	27	193	77	56	25	32	45	2,25
25	58	67	30	216	97	65	25	39	58	2,3
32	68	73	36	223	97	71	25	39	58	3
40	84	90	44	249	128	85	45	54	74	3,7
50	97	97	51	271	128	89	45	54	74	4,6
63	124	116	64	321	152	101	45	66	87	5,8
 75	166	149	85	386	270	136	70	64	206	6.8
 90	200	161	105	421	270	141	70	64	206	8.2
 110	238	178	123	484	320	164	120	64	256	10



DN10/15 - 50



## Ball valve type 546 PVC-U With mounting inserts With butt fusion spigots long PE 100 SDR11 metric

### Model:

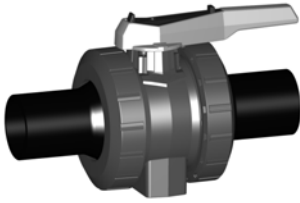
- Image and drawing DN65-100 please see **New product ball valve DN65-100**
- For easy installation and removal
- z-dimension, valve end and valve nut are **not compatible** with type 346 (DN10/15-50) resp. type 370 (DN65-100)
- Ball seals PTFE
- Integrated stainless steel mounting inserts

### Option:

- Individual configuration of the valve (see form)
- Multifunctional module with integrated limit switches
- Pneumatic or electric actuators from +GF+

d [mm]	DN [mm]	PN	kv-value ( $\Delta p=1$ bar) [l/min]	EPDM Code	FPM Code	kg
20	15	16	185	<b>161 546 822</b>	<b>161 546 832</b>	0.150
25	20	16	350	<b>161 546 823</b>	<b>161 546 833</b>	0.220
32	25	16	700	<b>161 546 824</b>	<b>161 546 834</b>	0.310
40	32	16	1000	<b>161 546 825</b>	<b>161 546 835</b>	0.550
50	40	16	1600	<b>161 546 826</b>	<b>161 546 836</b>	0.750
63	50	16	3100	<b>161 546 827</b>	<b>161 546 837</b>	1.360

d [mm]	D [mm]	H [mm]	H1 [mm]	H2 [mm]	L [mm]	L1 [mm]	L2 [mm]	L4 [mm]	L5 [mm]	L6 [mm]	M	e [mm]
20	50	57	27	12	193	77	56	25	32	45	M6	2,3
25	58	67	30	12	216	97	65	25	39	58	M6	2,3
32	68	73	36	12	223	97	71	25	39	58	M6	3
40	84	90	44	15	249	128	85	45	54	74	M8	3,7
50	97	97	51	15	271	128	89	45	54	74	M8	4,6
63	124	116	64	15	321	152	101	45	66	87	M8	5,8



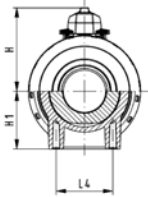
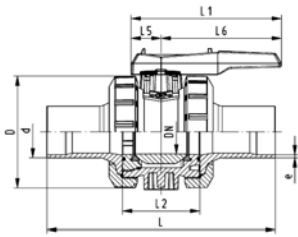
## Ball valve type 546 PVC-U With butt fusion spigots long PE 100 SDR17.6 metric

### Model:

- Image and drawing DN65-100 please see **New product ball valve DN65-100**
- For easy installation and removal
- z-dimension, valve end and valve nut are **not compatible** with type 346 (DN10/15-50) resp. type 370 (DN65-100)
- Ball seals PTFE
- Without mounting inserts

### Option:

- Individual configuration of the valve (see form)
- Multifunctional module with integrated limit switches
- Pneumatic or electric actuators from +GF+

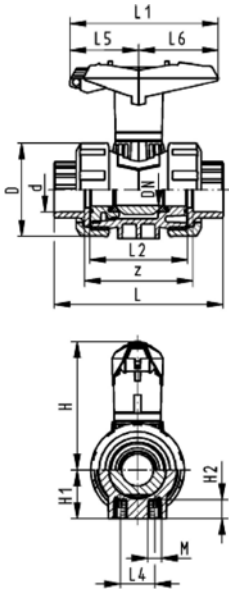


d [mm]	DN [mm]	PN	kv-value ( $\Delta p=1$ bar) [l/min]	EPDM Code	FPM Code	kg	
75	65	16	5000	<b>800 000 218</b>	<b>800 000 228</b>	5.000	
90	80	16	7000	<b>800 000 219</b>	<b>800 000 229</b>	7.400	
110	100	16	11000	<b>800 000 220</b>	<b>800 000 230</b>	11.700	

d [mm]	D [mm]	H [mm]	H1 [mm]	L [mm]	L1 [mm]	L2 [mm]	L4 [mm]	L5 [mm]	L6 [mm]	e [mm]	
75	166	149	85	386	270	136	70	64	206	4.3	
90	200	161	105	421	270	141	70	64	206	5.1	
110	238	178	123	484	320	164	120	64	256	6.3	



DN10/15 - 50



## Ball valve type 546 PVC-U With lockable handle With solvent cement sockets metric

### Model:

- Image and drawing DN65-100 please see **New product ball valve DN65-100**
- For easy installation and removal
- z-dimension, valve end and valve nut are **not compatible** with type 346 (DN10/15-50) resp. type 370 (DN65-100)
- Ball seals PTFE
- Integrated stainless steel mounting inserts
- Lockable hand lever with ratchet settings

### Option:

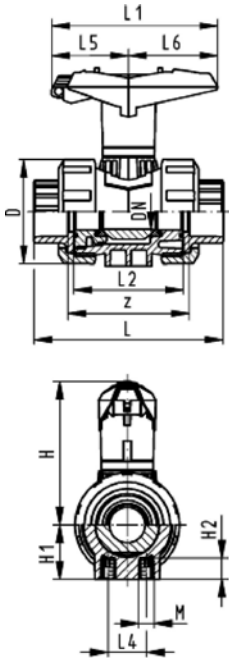
- Individual configuration of the valve (see form)
- Multifunctional module with integrated limit switches
- Pneumatic or electric actuators from +GF+

d [mm]	DN [mm]	PN	kv-value ( $\Delta p=1$ bar) [l/min]	EPDM Code	FPM Code	kg
16	10	16	71	<b>161 546 081</b>	<b>161 546 091</b>	0.165
20	15	16	185	<b>161 546 082</b>	<b>161 546 092</b>	0.165
25	20	16	350	<b>161 546 083</b>	<b>161 546 093</b>	0.255
32	25	16	700	<b>161 546 084</b>	<b>161 546 094</b>	0.355
40	32	16	1000	<b>161 546 085</b>	<b>161 546 095</b>	0.640
50	40	16	1600	<b>161 546 086</b>	<b>161 546 096</b>	0.840
63	50	16	3100	<b>161 546 087</b>	<b>161 546 097</b>	1.500
75	65	16	5000	<b>161 546 088</b>	<b>161 546 098</b>	5.200
90	80	16	7000	<b>161 546 089</b>	<b>161 546 099</b>	7.700
110	100	16	11000	<b>161 546 090</b>	<b>161 546 100</b>	12.000

d [mm]	D [mm]	H [mm]	H1 [mm]	H2 [mm]	L [mm]	L1 [mm]	L2 [mm]	L4 [mm]	L5 [mm]	L6 [mm]	M	z [mm]
16	50	79	27	12	92	87	56	25	42	45	M6	64
20	50	79	27	12	95	87	56	25	42	45	M6	64
25	58	88	30	12	110	108	65	25	50	58	M6	72
32	68	94	36	12	123	108	71	25	50	58	M6	79
40	84	113	44	15	146	140	85	45	66	75	M8	94
50	97	119	51	15	157	140	89	45	66	75	M8	95
63	124	141	64	15	183	165	101	45	78	87	M8	107
75	166	224	85	15	233	270	136	70	64	206	M8	144
90	200	235	105	15	254	270	141	70	64	206	M8	151
110	238	245	123	22	301	320	164	120	64	256	M12	174



DN10/15 - 50






## Ball valve type 546 PVC-U With lockable handle With solvent cement sockets Inch BS




### Model:

- Image and drawing DN65-100 please see **New product ball valve DN65-100**
- For easy installation and removal
- z-dimension, valve end and valve nut are **not compatible** with type 346 (DN10/15-50) resp. type 370 (DN65-100)
- Ball seals PTFE
- Integrated stainless steel mounting inserts
- Lockable hand lever with ratchet settings

### Option:

- Individual configuration of the valve (see form)
- Multifunctional module with integrated limit switches
- Pneumatic or electric actuators from +GF+

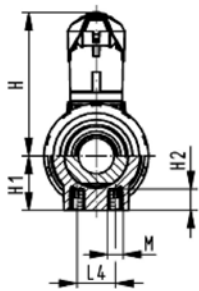
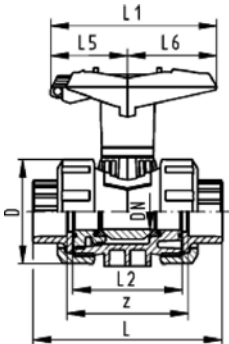
Inch	DN [mm]	PN	kv-value ( $\Delta p=1$ bar) [l/min]	EPDM Code	FPM Code	kg
3/8	10	16	71	<b>161 546 221</b>	<b>161 546 231</b>	0.165
1/2	15	16	185	<b>161 546 222</b>	<b>161 546 232</b>	0.165
3/4	20	16	350	<b>161 546 223</b>	<b>161 546 233</b>	0.255
1	25	16	700	<b>161 546 224</b>	<b>161 546 234</b>	0.355
1 1/4	32	16	1000	<b>161 546 225</b>	<b>161 546 235</b>	0.625
1 1/2	40	16	1600	<b>161 546 226</b>	<b>161 546 236</b>	0.855
2	50	16	3100	<b>161 546 227</b>	<b>161 546 237</b>	1.535
 2 1/2	65	16	5000	<b>161 546 088</b>	<b>161 546 098</b>	5.200
 3	80	16	7000	<b>161 546 229</b>	<b>161 546 239</b>	7.700
 4	100	16	11000	<b>161 546 230</b>	<b>161 546 240</b>	12.000

Inch	D [mm]	H [mm]	H1 [mm]	H2 [mm]	L [mm]	L1 [mm]	L2 [mm]	L4 [mm]	L5 [mm]	L6 [mm]	M	z [mm]
3/8	50	79	27	12	92	87	56	25	42	45	M6	60
1/2	50	79	27	12	95	87	56	25	42	45	M6	60
3/4	58	88	30	12	110	108	65	25	50	58	M6	69
1	68	94	36	12	123	108	71	25	50	58	M6	75
1 1/4	84	113	44	15	146	140	85	45	66	75	M8	89
1 1/2	97	119	51	15	157	140	89	45	66	75	M8	97
2	124	141	64	15	183	165	101	45	78	87	M8	110
 2 1/2	166	224	85	15	233	270	136	70	64	206	M8	144
 3	200	235	105	15	254	270	141	70	64	206	M8	151
 4	238	245	123	22	301	320	164	120	64	256	M12	174





DN10/15 - 50



## Ball valve type 546 PVC-U With lockable handle With solvent cement sockets Inch ASTM Inclusive 2 threaded valve ends NPT

### Model:

- For easy installation and removal
- z-dimension, valve end and valve nut are **not compatible** with type 346 (DN10/15-50) resp. type 370 (DN65-100)
- Ball seals PTFE
- Lockable hand lever with ratchet settings
- Integrated stainless steel mounting inserts
- Threaded valve ends are only enclosed for DN10/15-50

### Option:

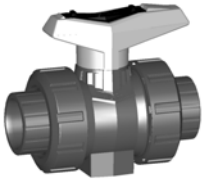
- Individual configuration of the valve (see form)
- Multifunctional module with integrated limit switches
- Pneumatic or electric actuators from +GF+

Inch	DN [mm]	PN	kv-value ( $\Delta p=1$ bar) [l/min]	EPDM Code	FPM Code	kg
3/8	10	16	71	<b>161 546 361</b>	<b>161 546 371</b>	0.195
1/2	15	16	185	<b>161 546 362</b>	<b>161 546 372</b>	0.205
3/4	20	16	350	<b>161 546 363</b>	<b>161 546 373</b>	0.315
1	25	16	700	<b>161 546 364</b>	<b>161 546 374</b>	0.450
1 1/4	32	16	1000	<b>161 546 365</b>	<b>161 546 375</b>	0.770
1 1/2	40	16	1600	<b>161 546 366</b>	<b>161 546 376</b>	1.030
2	50	16	3100	<b>161 546 367</b>	<b>161 546 377</b>	1.820
2 1/2	65	16	5000	<b>161 546 368</b>	<b>161 546 378</b>	5.300
3	80	16	7000	<b>161 546 369</b>	<b>161 546 379</b>	7.700
4	100	16	11000	<b>161 546 370</b>	<b>161 546 380</b>	11.900

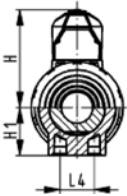
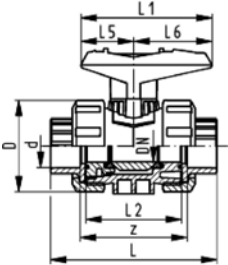
Inch	D [mm]	H [mm]	H1 [mm]	H2 [mm]	L [mm]	L1 [mm]	L2 [mm]	L4 [mm]	L5 [mm]	L6 [mm]	M	z [mm]
3/8	50	79	27	12	105	87	56	25	42	45	M6	67
1/2	50	79	27	12	105	87	56	25	42	45	M6	61
3/4	58	88	30	12	121	108	65	25	50	58	M6	70
1	68	94	36	12	133	108	71	25	50	58	M6	76
1 1/4	84	113	44	15	154	140	85	45	66	74	M8	90
1 1/2	97	119	51	15	164	140	89	45	66	74	M8	94
2	124	141	64	15	183	165	101	45	78	87	M8	107
2 1/2	166	224	85	15	233	270	136	70	64	206	M8	144
3	200	235	105	15	254	270	141	70	64	206	M8	151
4	238	245	123	22	301	320	164	120	64	256	M12	174

# Ball valves

## Ball valve type 546 PVC-U SF With solvent cement sockets metric



DN10/15 - 50



### Model:

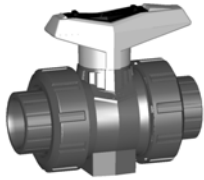
- Image and drawing DN65-100 please see **New product ball valve DN65-100**
- Silicon-free / paint-compatible
- For easy installation and removal
- With PVDF ball seal
- z-dimension, valve end and valve nut are **not compatible** with type 346 (DN10/15-50) resp. type 370 (DN65-100)
- Without mounting inserts

### Option:

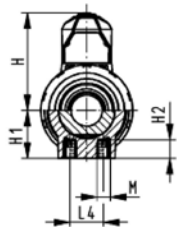
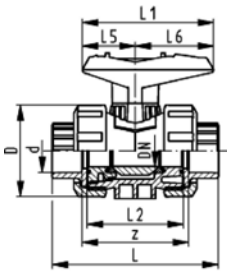
- Individual configuration of the valve (see form)
- Multifunctional module with integrated limit switches

d [mm]	DN [mm]	PN	kv-value ( $\Delta p=1$ bar) [l/min]	EPDM Code	FPM Code	kg
16	10	16	71	<b>161 546 601</b>	<b>161 546 611</b>	0.150
20	15	16	185	<b>161 546 602</b>	<b>161 546 612</b>	0.150
25	20	16	350	<b>161 546 603</b>	<b>161 546 613</b>	0.230
32	25	16	700	<b>161 546 604</b>	<b>161 546 614</b>	0.330
40	32	16	1000	<b>161 546 605</b>	<b>161 546 615</b>	0.600
50	40	16	1600	<b>161 546 606</b>	<b>161 546 616</b>	0.800
63	50	16	3100	<b>161 546 607</b>	<b>161 546 617</b>	1.460
75	65	16	5000	<b>161 546 608</b>	<b>161 546 618</b>	4.900
90	80	16	7000	<b>161 546 609</b>	<b>161 546 619</b>	7.400
110	100	16	11000	<b>161 546 610</b>	<b>161 546 620</b>	11.600

d [mm]	D [mm]	H [mm]	H1 [mm]	L [mm]	L1 [mm]	L2 [mm]	L4 [mm]	L5 [mm]	L6 [mm]	z [mm]
16	50	57	27	92	77	56	25	32	45	64
20	50	57	27	95	77	56	25	32	45	64
25	58	67	30	110	97	65	25	39	58	72
32	68	73	36	123	97	71	25	39	58	79
40	84	90	44	146	128	85	45	54	74	94
50	97	97	51	157	128	89	45	54	74	95
63	124	116	64	183	152	101	45	66	87	107
75	166	149	85	233	270	136	70	64	206	144
90	200	161	105	254	270	141	70	64	206	151
110	238	178	123	301	320	164	120	64	256	174



DN10/15 - 50



## Ball valve type 546 PVC-U SF With mounting inserts With solvent cement sockets metric

### Model:

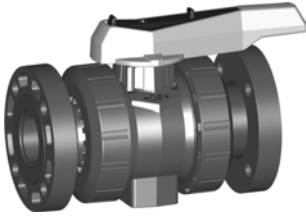
- Image and drawing DN65-100 please see **New product ball valve DN65-100**
- Silicon-free / paint-compatible
- For easy installation and removal
- z-dimension, valve end and valve nut are **not compatible** with type 346 (DN10/15-50) resp. type 370 (DN65-100)
- With PVDF ball seal
- Integrated stainless steel mounting inserts

### Option:

- Individual configuration of the valve (see form)
- Multifunctional module with integrated limit switches

d [mm]	DN [mm]	PN	kv-value ( $\Delta p=1$ bar) [l/min]	EPDM Code	FPM Code	kg
16	10	16	71	800 000 601	800 000 611	0.150
20	15	16	185	800 000 602	800 000 612	0.150
25	20	16	350	800 000 603	800 000 613	0.230
32	25	16	700	800 000 604	800 000 614	0.330
40	32	16	1000	800 000 605	800 000 615	0.600
50	40	16	1600	800 000 606	800 000 616	0.800
63	50	16	3100	800 000 607	800 000 617	1.460
75	65	16	5000	800 000 608	800 000 618	4.900
90	80	16	7000	800 000 609	800 000 619	7.400
110	100	16	11000	800 000 610	800 000 620	11.600

d [mm]	D [mm]	H [mm]	H1 [mm]	H2 [mm]	L [mm]	L1 [mm]	L2 [mm]	L4 [mm]	L5 [mm]	L6 [mm]	M	z [mm]
16	50	57	27	12	92	77	56	25	32	45	M6	64
20	50	57	27	12	95	77	56	25	32	45	M6	64
25	58	67	30	12	110	97	65	25	39	58	M6	72
32	68	73	36	12	123	97	71	25	39	58	M6	79
40	84	90	44	15	146	128	85	45	54	74	M8	94
50	97	97	51	15	157	128	89	45	54	74	M8	95
63	124	116	64	15	183	152	101	45	66	87	M8	107
75	166	149	85	15	233	270	136	70	64	206	M8	144
90	200	161	105	15	254	270	141	70	64	206	M8	151
110	238	178	123	22	301	320	164	120	64	256	M12	174



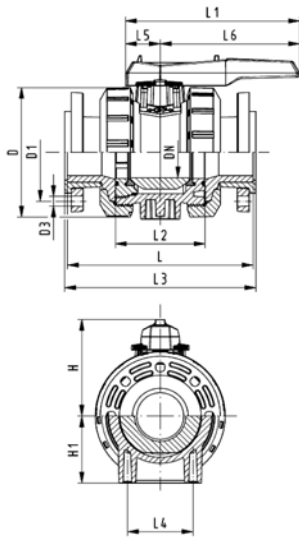
## Ball valve type 546 PVC-U SF With mounting inserts With backing flanges PVC-U metric

### Model:

- Image and drawing DN65-100 please see **New product ball valve DN65-100**
- Silicon-free / paint-compatible
- For easy installation and removal
- z-dimension, valve end and valve nut are **not compatible** with type 346 (DN10/15-50) resp. type 370 (DN65-100)
- With PVDF ball seal
- Integrated stainless steel mounting inserts
- Overall length according to EN 558-1
- Connecting dimension: ISO 7005 PN10, EN 1092 PN10, DIN 2501 PN10

### Option:

- Individual configuration of the valve (see form)
- Multifunctional module with integrated limit switches



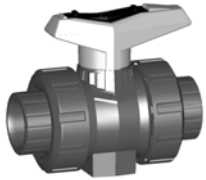
d [mm]	DN [mm]	PN	kv-value ( $\Delta p=1$ bar) [l/min]	EPDM Code	FPM Code	kg								
75	65	10	5000	<b>161 546 128</b>	<b>161 546 138</b>	7.200								
90	80	10	7000	<b>161 546 129</b>	<b>161 546 139</b>	10.600								
110	100	10	11000	<b>161 546 130</b>	<b>161 546 140</b>	16.500								

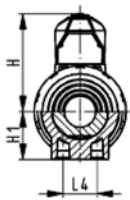
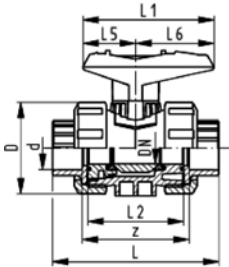
d [mm]	D [mm]	D1 [mm]	D3 [mm]	L [mm]	L1 [mm]	L2 [mm]	L3 [mm]	L4 [mm]	L5 [mm]	L6 [mm]	H [mm]	H1 [mm]	M	
75	166	145	18	284	270	136	290	70	64	206	149	85	8	
90	200	160	18	300	270	141	310	70	64	206	161	105	8	
110	238	180	18	340	320	164	350	120	64	256	178	123	12	

# Ball valves

## Ball valve type 546 PVC-U SF With solvent cement sockets Inch ASTM



DN10/15 - 50









### Model:

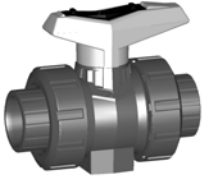
- Image and drawing DN65-100 please see **New product ball valve DN65-100**
- Silicon-free / paint-compatible
- For easy installation and removal
- z-dimension, valve end and valve nut are **not compatible** with type 346 (DN10/15-50) resp. type 370 (DN65-100)
- Ball seals: Inch ASTM in PTFE
- Without mounting inserts

### Option:

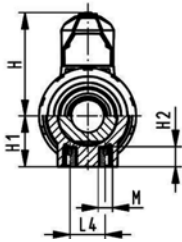
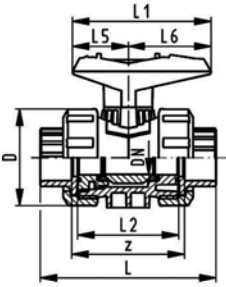
- Individual configuration of the valve (see form)
- Multifunctional module with integrated limit switches

Inch	DN [mm]	PN	kv-value ( $\Delta p=1$ bar) [l/min]	EPDM Code	FPM Code	kg
3/8	10	16	71	<b>161 546 681</b>	<b>161 546 691</b>	0.155
1/2	15	16	185	<b>161 546 682</b>	<b>161 546 692</b>	0.155
3/4	20	16	350	<b>161 546 683</b>	<b>161 546 693</b>	0.240
1	25	16	700	<b>161 546 684</b>	<b>161 546 694</b>	0.340
1 1/4	32	16	1000	<b>161 546 685</b>	<b>161 546 695</b>	0.605
1 1/2	40	16	1600	<b>161 546 686</b>	<b>161 546 696</b>	0.805
2	50	16	3100	<b>161 546 687</b>	<b>161 546 697</b>	1.460
 2 1/2	65	16	5000	<b>161 546 688</b>	<b>161 546 698</b>	4.900
 3	80	16	7000	<b>161 546 689</b>	<b>161 546 699</b>	7.400
 4	100	16	11000	<b>161 546 690</b>	<b>161 546 700</b>	11.500

Inch	D [mm]	H [mm]	H1 [mm]	L [mm]	L1 [mm]	L2 [mm]	L4 [mm]	L5 [mm]	L6 [mm]	z [mm]
3/8	50	57	27	105	77	56	25	32	45	67
1/2	50	57	27	105	77	56	25	32	45	61
3/4	58	67	30	121	97	65	25	39	58	70
1	68	73	36	133	97	71	25	39	58	76
1 1/4	84	90	44	154	128	85	45	54	74	90
1 1/2	97	97	51	164	128	89	45	54	74	94
2	124	116	64	183	152	101	45	66	87	107
 2 1/2	166	149	85	233	270	136	70	64	206	144
 3	200	161	105	254	270	141	70	64	206	151
 4	238	178	123	301	320	164	120	64	256	174



DN10/15 - 50






## Ball valve type 546 PVC-U SF With mounting inserts With solvent cement sockets Inch ASTM




### Model:

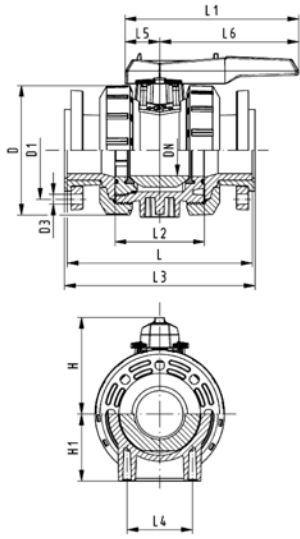
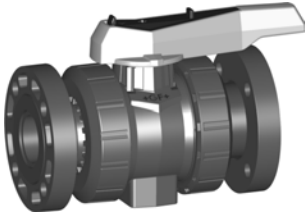
- Image and drawing DN65-100 please see **New product ball valve DN65-100**
- Silicon-free / paint-compatible
- For easy installation and removal
- z-dimension, valve end and valve nut are **not compatible** with type 346 (DN10/15-50) resp. type 370 (DN65-100)
- Ball seals: Inch ASTM in PTFE
- Integrated stainless steel mounting inserts

### Option:

- Individual configuration of the valve (see form)
- Multifunctional module with integrated limit switches

Inch	DN [mm]	PN	kv-value ( $\Delta p=1$ bar) [l/min]	EPDM Code	FPM Code	kg	
3/8	10	16	71	<b>161 546 841</b>	<b>161 546 851</b>	0.159	
1/2	15	16	185	<b>161 546 842</b>	<b>161 546 852</b>	0.159	
3/4	20	16	350	<b>161 546 843</b>	<b>161 546 853</b>	0.244	
1	25	16	700	<b>161 546 844</b>	<b>161 546 854</b>	0.344	
1 1/4	32	16	1000	<b>161 546 845</b>	<b>161 546 855</b>	0.615	
1 1/2	40	16	1600	<b>161 546 846</b>	<b>161 546 856</b>	0.815	
2	50	16	3100	<b>161 546 847</b>	<b>161 546 857</b>	1.470	
 2 1/2	65	16	5000	<b>161 546 848</b>	<b>161 546 858</b>	4.900	
 3	80	16	7000	<b>161 546 849</b>	<b>161 546 859</b>	7.400	
 4	100	16	11000	<b>161 546 850</b>	<b>161 546 860</b>	11.500	

Inch	D [mm]	H [mm]	H1 [mm]	H2 [mm]	L [mm]	L1 [mm]	L2 [mm]	L4 [mm]	L5 [mm]	L6 [mm]	M	z [mm]	
3/8	50	57	27	12	105	77	56	25	32	45	M6	67	
1/2	50	57	27	12	105	77	56	25	32	45	M6	61	
3/4	58	67	30	12	121	97	65	25	39	58	M6	70	
1	68	73	36	12	133	97	71	25	39	58	M6	76	
1 1/4	84	90	44	16	154	128	85	45	54	74	M8	90	
1 1/2	97	97	51	16	164	128	89	45	54	74	M8	94	
2	124	116	64	16	183	152	101	45	66	87	M8	107	
 2 1/2	166	149	85	15	233	270	136	70	64	206	M8	144	
 3	200	161	105	15	254	270	141	70	64	206	M8	151	
 4	238	178	123	22	301	320	164	120	64	256	M12	174	



## Ball valve type 546 PVC-U SF With mounting inserts With backing flanges PVC-U ASTM/ANSI

### Model:

- Image and drawing DN65-100 please see **New product ball valve DN65-100**
- Silicon-free / paint-compatible
- For easy installation and removal
- z-dimension, valve end and valve nut are **not compatible** with type 346 (DN10/15-50) resp. type 370 (DN65-100)
- Ball seals: Inch ASTM in PTFE
- Integrated stainless steel mounting inserts
- Overall length according to EN 558-1
- Connecting dimension: ANSI/ASME B 16.5 class 150 (ASTM D 4024), BS EN 1759

### Option:

- Individual configuration of the valve (see form)
- Multifunctional module with integrated limit switches

Inch	DN [mm]	PN	kv-value ( $\Delta p=1$ bar) [l/min]	EPDM Code	FPM Code	kg
2 1/2	65	10	5000	<b>161 546 188</b>	<b>161 546 198</b>	7.300
3	80	10	7000	<b>161 546 189</b>	<b>161 546 199</b>	10.600
4	100	10	11000	<b>161 546 190</b>	<b>161 546 200</b>	16.400

Inch	D [mm]	D1 [mm]	D3 [mm]	L [mm]	L1 [mm]	L2 [mm]	L3 [mm]	L4 [mm]	L5 [mm]	L6 [mm]	H [mm]	H1 [mm]	M
2 1/2	166	140	19	284	270	136	290	70	64	206	149	85	8
3	200	152	19	300	270	141	310	70	64	206	161	105	8
4	238	191	19	340	320	164	350	120	64	256	178	123	12